

MEAB

ADMCS-10 - A Mini - AKUFVE



The **ADMCS-10** instrument is a small version of the AKUFVE instrument to improve accuracy and rapidity in the measuring technique of solvent extraction distribution data.

MEAB Metalextraktion AB, Datavägen 51, SE-43632 ASKIM,

☎ +46 31 685414.

Fax +46 31 685474.

www.meab-mx.se

MEAB ChemieTechnik GmbH, Dennewartstrasse 25, D-52068 AACHEN,

☎ +49 241 9631180.

Fax +49 241 9631185.

www.meab-mx.com

Sweden

contact@meab-mx.se

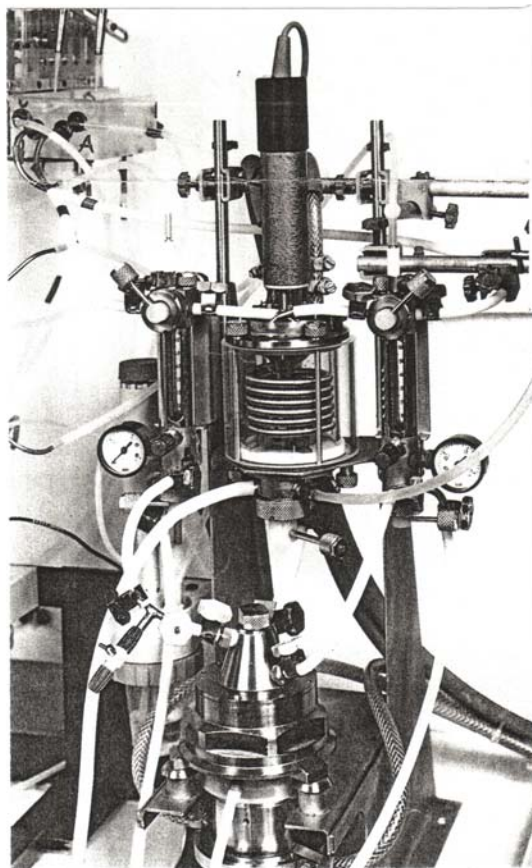
Germany

contact@meab-mx.com

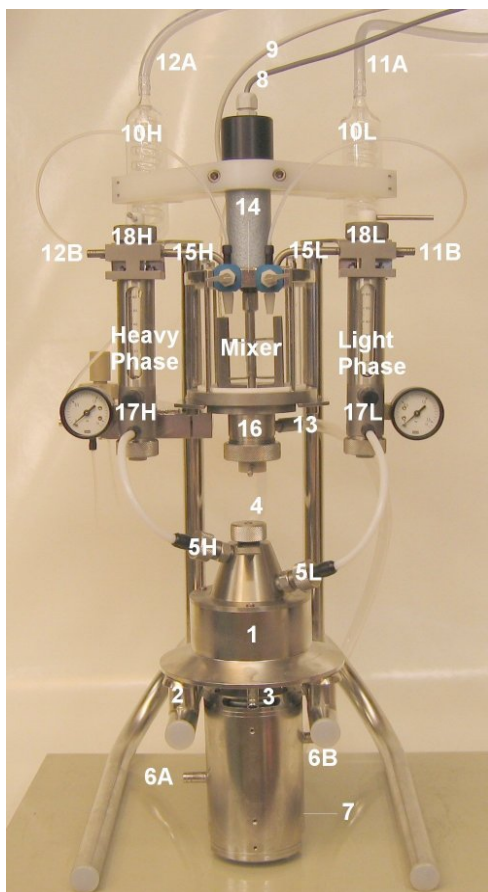
The ADMCS-10 instrument – mini-AKUFVE

The ADMCS-10 instrument is a dynamic-mixer/centrifugal-separator (mini-AKUFVE) unit consists of:

- A dynamic mixer (about 150 cc) with variable speed stirrer
- The H-centrifuge (H-10, about 15 cc) with electric AC-motor drive incl. variable frequency inverter
- A flow system with regulating, directing and sampling valves, heat exchangers, flow meters and pressure gauges



An ADMCS-10 Unit for Glove-box Use



- 1 H-10 Centrifuge
- 2 Special rubber mountings for the centrifuge
- 3 Centrifuge drain
- 4 Centrifuge mixture inflow (on the backside)
- 5 Centrifuge outflow of: (L) light and (H) heavy phases
- 6 Centrifuge motor cooling jacket: (A) water inflow and (B) outflow
- 7 Centrifuge motor electric connection (on the backside)
- 8 Mixer motor electric connection
- 9 Temperature sensor connection
- 10 Cooling/heating glass exchangers: (L) light and (H) heavy phases
- 11 Light phase to (A) and from (B) radiometric detector
- 12 Heavy phase to (A) and from (B) radiometric detector
- 13 Mixer drain
- 14 Main liquid entrance
- 15 Direct return of separated phases: (L) light and (H) heavy phases
- 16 Mixture outflow regulation valve
- 17 Throttling valves for (L) light and (H) heavy phases
- 18 Directing valves for (L) light and (H) heavy ph

- The dimensions of the ADMCS-10 unit are, height 65 cm, width 32 cm, and depth 40 cm.

- The electrical requirement is 1 phase, 220/110 V, 50/60 Hz.